

# MONTHLY MEMBERSHIP PROGRESS REPORT

LOCATION INDIA

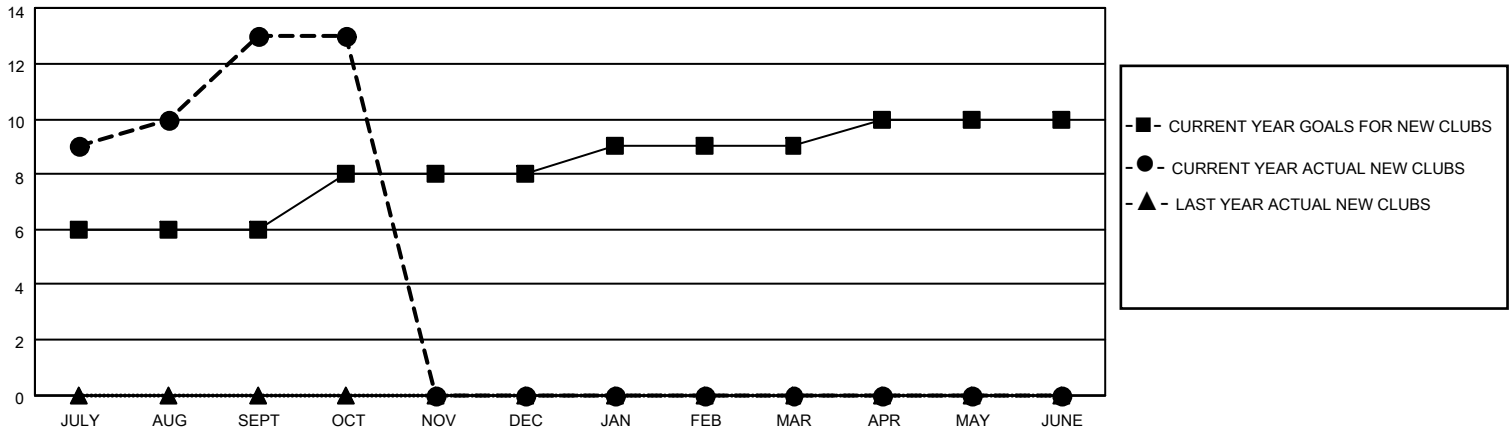
District 324 F

Results as of: 10/31/2021

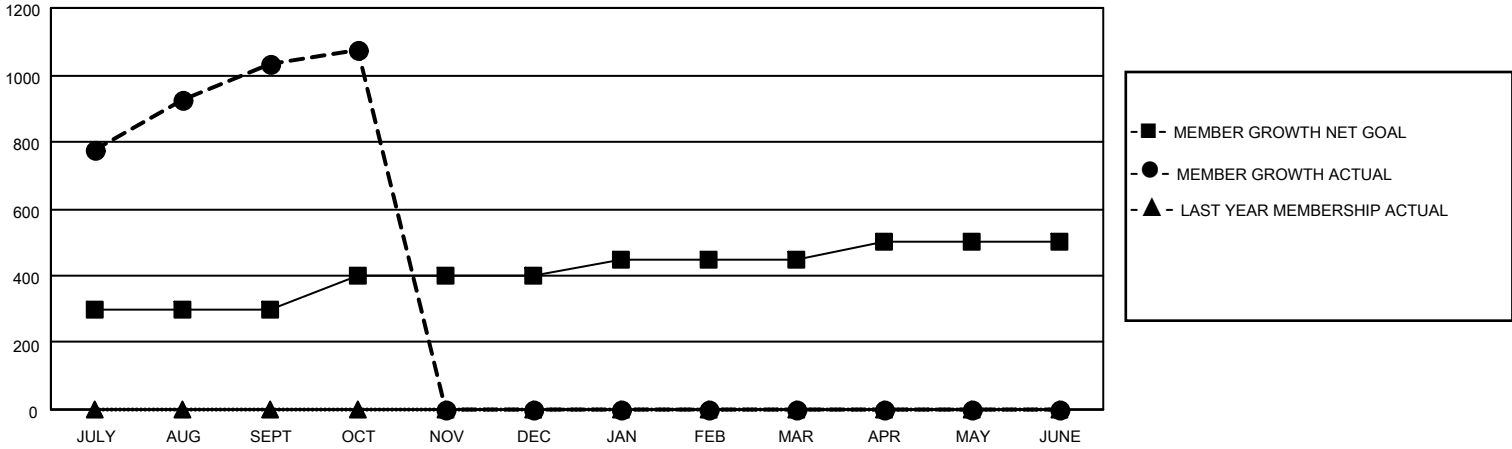
Clubs			
RESULTS FOR 2021-2022			
QUARTER	NEW CLUB GOAL	NEW CLUBS	DROPPED CLUBS
JULY/AUG/SEPT	6	13	0
OCT/NOV/DEC	2	0	0
JAN/FEB/MAR	1	0	0
APR/MAY/JUNE	1	0	0

Members			
RESULTS FOR 2021-2022			
QUARTER	MEMBER GROWTH NET GOAL	MEMBER GROWTH ACTUAL	DROPPED MEMBERS ACTUAL (including transfers)
JULY/AUG/SEPT	300	1266	194
OCT/NOV/DEC	100	71	32
JAN/FEB/MAR	50	0	0
APR/MAY/JUNE	50	0	0

**GOALS AND ACTUAL NEW CLUBS CUMULATIVE**



**GOALS AND ACTUAL MEMBERS CUMULATIVE**



**DROPPED CLUBS: 0**

**172 CLUBS OF 231 ADDED 1 OR MORE NEW MEMBERS**

**GENDER DISTRIBUTION**

MALE	9,166 (88.79%)
FEMALE	1,157 (11.21%)
NON BINARY	0 (0.00%)
PREFER NOT TO ANSWER	0 (0.00%)

**DROPPED MEMBERS**

[CLICK HERE FOR CUMULATIVE MEMBERSHIP DATA](#)

DECEASED	27
CLUB CANCELLED	0
OTHER	199
<b>TOTAL</b>	<b>226</b>

TOTAL FAMILY UNIT MEMBERS 1,838

FAMILY MEMBERS PAYING HALF DUES 1,053